



# Greater Manchester Principal Partner Scheme

**Help grow and increase the impact of our work by becoming a Principal Partner of Resolve Poverty.**

Principal Partners commit to supporting our work at an enhanced level and contribute to the sustainability of the organisation.

Financially supporting Resolve Poverty would directly fund our work to prevent and reduce poverty and create a more prosperous and inclusive city region.

The Greater Manchester Principal Partner Scheme is for all businesses and organisations who want to see a Greater Manchester free from poverty.

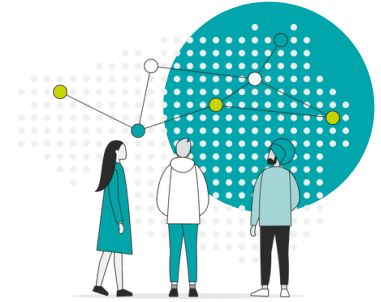


# Our work

The Greater Manchester Principal Partner scheme helps us continue to tackle poverty in the city-region. You'll be supporting us to:

## Support stakeholders with the knowledge to tackle poverty:

- By producing the Greater Manchester Poverty Monitor, which highlights the scale of poverty and inequality of outcomes in the city-region
- Sharing good practice and key updates through our newsletter
- Running the Local Authority Officers' Forum, a dedicated space for Greater Manchester's ten local authorities and combined authority around the poverty agenda

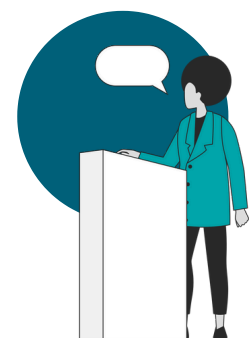


## Directly responding to poverty in Greater Manchester:

- Co-producing Money Advice Referral Tools for Greater Manchester boroughs, helping over 400 organisations support people to access financial support and maximise their incomes
- Providing benefit and debt advice to parents in schools, helping 100+ families to access over £340,000 worth of cash support

## Amplify our voice through:

- Engaging in key strategic Greater Manchester anti-poverty forums, such as the Tackling Inequalities Board and Cost-of-Living Response Group
- Taking a Greater Manchester voice to Westminster through national campaigning



# What's in it for you?

There are lots of benefits you can unlock for your organisation by becoming a Greater Manchester Principal Partner:

## Directly contributing to local anti-poverty efforts

**Supporting us is a great way to help create positive change.**

Your organisation will gain increased visibility within our network and wider community, raising awareness of your organisation's mission and work.

## The opportunity to support our work strategically

**You'll have the chance to participate in bi-annual advisory group meetings.**

These provide an opportunity to network, discuss the progress of our work, and exchange best practices with our team and partners.

## Discounts on our training and events

**You'll be able to access exclusive discounts on our training and events offer.**

This includes all our training courses, bespoke training, consultancy and our annual conference.

## Elevates your organisation's profile

**We will promote that you are a Principal Partner across our website, newsletter and social media.**

You will get a Principal Partners logo to use on any materials or platforms to highlight your affiliation with Resolve Poverty.

Our network is  
**2,600+**  
people in local gov, VCSE orgs and more



The outcome you helped us reach is genuinely life changing

We are a steering group member of the  
**End Child Poverty Coalition**





"Kellogg's has a long history of investing in the community so as a food company based in Greater Manchester since 1938, we are proud to support the work of Resolve Poverty through becoming a Principal Partner"

- Kate Prince, Senior Manager, ESG for Europe, *Kellogg's*

## Becoming a Principal Partner

The fee to become a Greater Manchester Principal Partner is £4000 per annum and we ask for a commitment of three years.

Interested in becoming a Principal Partner?

We would be delighted to chat more about the ways the Greater Manchester Principal Partner Scheme helps us to continue tackling poverty and how together, we can work towards a Greater Manchester free from poverty where all residents can realise their potential and access the benefits of living in a diverse and vibrant city region.



"We are very pleased to support Resolve Poverty, working in partnership to challenge policies and practices and put the voices of people in poverty at the centre of change."

- Silvia Galandini, Domestic Policy Lead, OXFAM



### Get in touch

Please contact CEO Graham Whitham at [graham@resolvepoverty.org](mailto:graham@resolvepoverty.org) to discuss this in more detail.





# Thank you to all our Principal Partners for their support

